

ABB i-bus® EIB / KNX

Operating system update LEAN- and SMARTtouch in several languages



Status : June 2008

Index of contents

<i>Operating system update Panel</i>	<u>3</u>
• General conduct	<u>3</u>
• Procedure operating system update	<u>3</u>
• Instruction for check-up of Firmware version V1.10	<u>5</u>

Operating system update Panel

- **General conduct**

An update of a LEAN- and SMARTtouch is only viable while it's in connection to a PC-connected Multimedia /SD card *and* the belonging card reader.

Such card readers, including MMC / SD cards, are obtainable in the computer department of relevant specialized dealers or discounters.

With the implementation of an operating system update in the LEAN-/ SMART-touch, the ongoing project in the panel is not lost.

- **Procedure operating system update**

1. First of all, download the .exe-file with your desired language from the internet and copy the containing files to a folder on the hard drive.

Example:

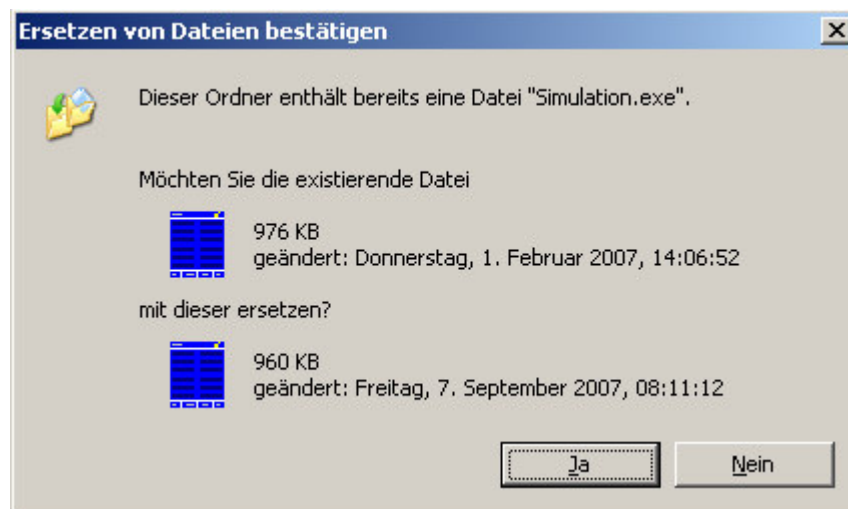
	Dokumente				
	Downloads				
	Busch Script				
	Diverse				
	Plansoft		File Folder		04.10.2006 12:33
	eng_col.pid	577 KB	PID-Datei		11.09.2007 08:14
	eng_sw.pid	577 KB	PID-Datei		11.09.2007 08:16
	Simulation.exe	960 KB	Application		07.09.2007 08:11

2. Now copy the file „**Simulation.exe**“ into the „RCP-Tool“-folder that's already installed on the PC of your LEAN-/SMARTtouch software. According to the standard, these are located in the following installation sequences:

**c:/Programme/EIB-Programme/RCP-Tool or
c:/Program-Files/EIB-Programme/RCP-Tool**

	EIB-Programme				
	LCD-Verwaltung				
	Power-Project40				
	RCP-Tool				
	de				
	en				
	On_Hilfe				
	Products				
	ScreenSaver				
	Symhnlk				
	RcpSystemTexts.dll	4 KB	Application Extension		18.11.2005 13:55
	RCPTypes.dll	16 KB	Application Extension		15.05.2007 15:17
	ResourceFactory.dll	48 KB	Application Extension		15.05.2007 15:17
	Simulation.exe	960 KB	Application		07.09.2007 08:11
	SimulationWithUnicode.exe	1.368 KB	Application		26.03.2007 12:53
	SourceGrid2.dll	188 KB	Application Extension		01.03.2005 10:02
	SourceLibrary.dll	132 KB	Application Extension		05.05.2004 09:40
	SystemResources.cs-CZ.xml	34 KB	XML-Dokument		06.03.2006 10:09
	SystemResources.da-DK.xml	30 KB	XML-Dokument		20.01.2006 15:18
	SystemResources.de-De.xml	1 KB	XML-Dokument		24.11.2005 16:15

Confirm the inquiry if the existing Simulation.exe should be overwritten with a “Yes”.



3. Connect the multimedia/ SD-card reader to the PC and plug the belonging card into the reader.

Normally your PC now automatically detects the reader and displays it as a removable medium in the Explorer overview.

Copy the two PID-files with the respective languages on to the MMC/SD-card.



4. Take the MMC /SD-card out from the reader. Please find a slot marked with SD card on the panel behind the chromed flap and plug it in.
 - a) Push the button „System“, down left on the panels Startpage. You are now located at the page for configurations.
 - b) Subsequently touch the button „Next“, down right on the page.
 - c) Push the button „Startup / implement“ and the following „Read multimedia / SD-card“ at the reappearing page.
5. A small Pop-up window will appear, in which you can see both of the PID-files being located on the card.

Please download the special* .pid-file via SD-card into the panel.

For **colour versions** please use file **XXX*_COL.pid** and
for **monochrome versions** please use file **XXX*_SW.pid**

* XXX = country code
The files are also available for different languages from our homepage.

Please confirm with OK. The operating system will be downloaded into the LEAN- and SMARTtouch panel.

- **Instruction for check-up of Firmware version V1.10**

Through the touch button(s) "System / Forward / Start-up" and pushing the touch button "System info", the LEAN- and SMARTtouch will display "V1.10, Jun. 3, 2008".

After a reboot the date will be shown as 01.01.2007.

You also have the possibility to make a reset at the Start-up page by pressing the button Reset.

Thereby is a reset by switching off the 230 V supply voltage not necessary.